

# Change request IFTDGN

Transport license for remain on board notifications of DG.

October 1<sup>st</sup> -2<sup>nd</sup>  
2014



# Agenda

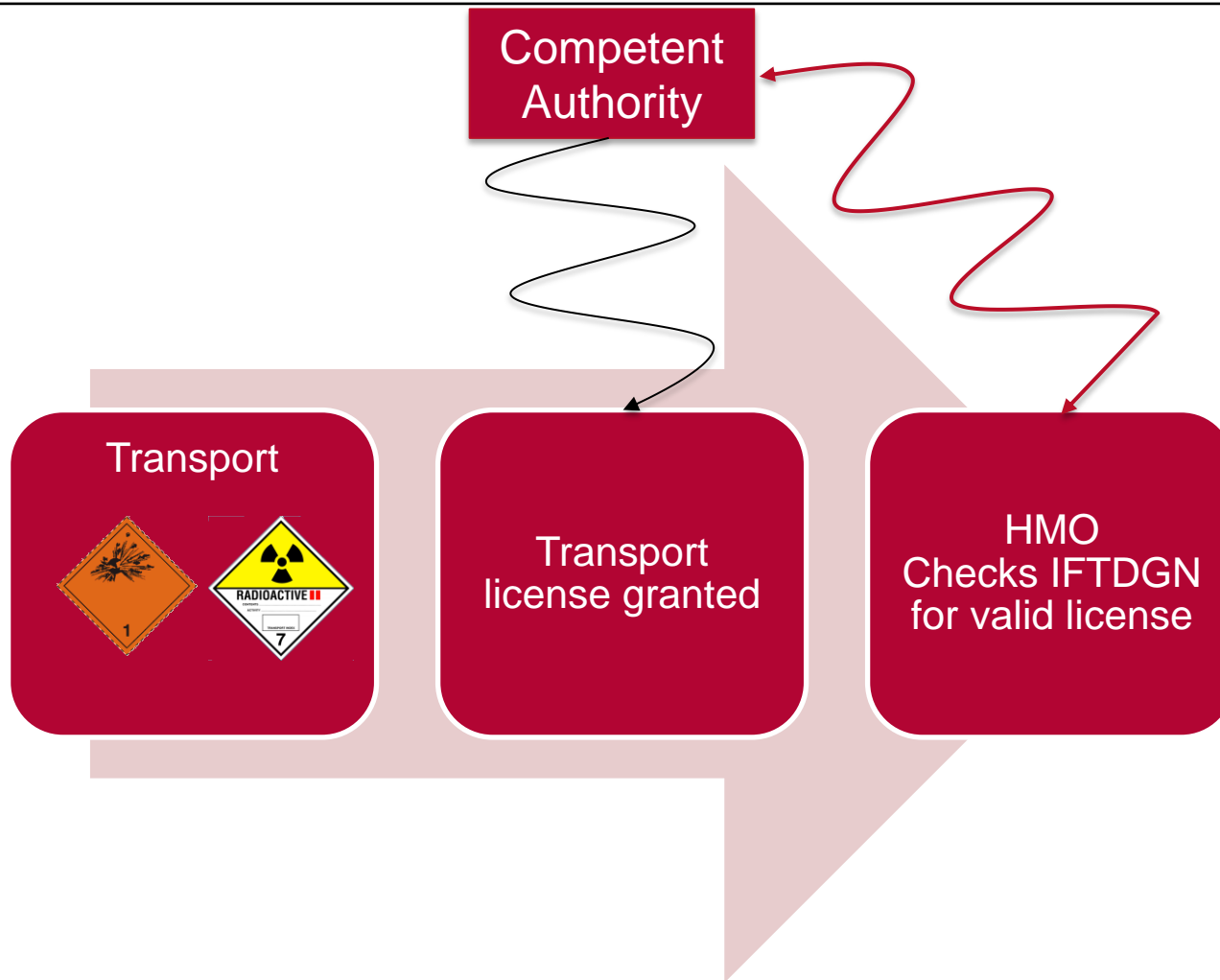
1. Functional application in Antwerp
2. Standard use in PROTECT IFTDGN
3. Change request

**1**

# Transport license

Functional application in Antwerp

# Use of transport license info in Antwerp



Transport licenses:

- Linked to dangerous goods
- Not to a specific means of transport

In the development of DG Module of APICS2



**Mandatory use on CNI-level  
Not allowed on Header**



**Clear relation to the DG**

([more info](#) on APCS website)

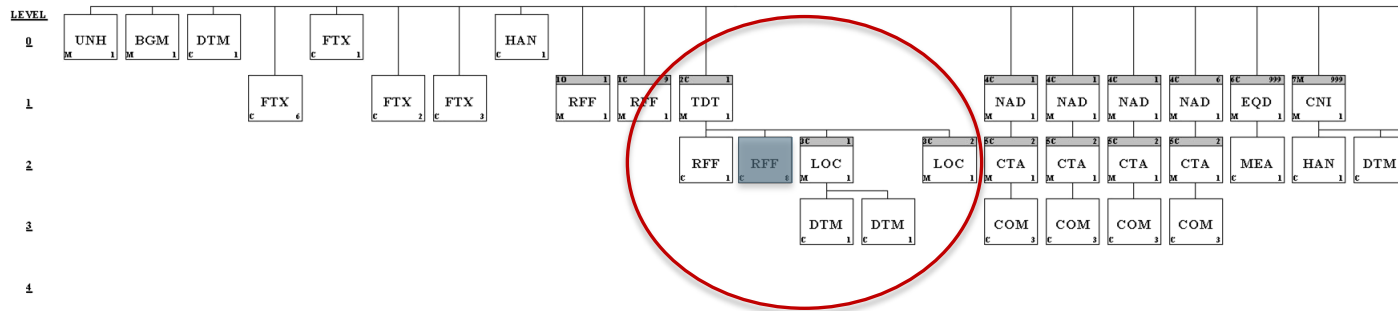
# 2

## Transport license

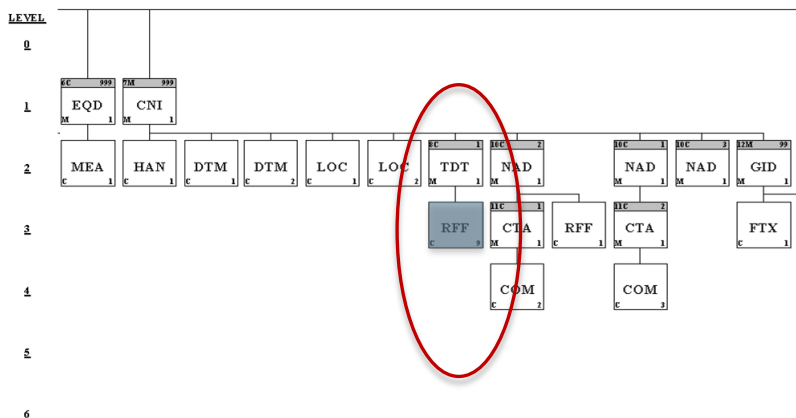
Standard use in Protect IFTDGN

# Use of transport license info in the IFTDGN

- transport license info is located in the IFTDGN in the TDT-segment:
  - on **header level**:



- on **consignment level**:



3

## Transport license

Change request



# Scenario: Remain on board (ROB)

- No TDT-segment present on CNI-level in case of ROB
- So no TDT.RFF is possible to mention license number permission
- No location in the IFTDGN for a transport license ...

- Possible solution:

extending data element 8051  
(Transport stage code qualifier)  
in segment group 8:

allowing an extra value '20'  
(Main carriage transport), as used  
in TDT on header level

Dangerous Goods Notification message



**Segment:** TDT Transport Information  
**Position:** 0300 (Trigger Segment)  
**Group:** SG7-SG8  
**Level:** 2  
**Usage:** Mandatory  
**Max Use:** 1  
**Purpose:** A segment to indicate the transport information related to the arrival (pre-carriage) or the departure (on- carriage) of the consignment. The transport details to be specified: - Pre-carriage - On-carriage

Dependency Notes:

Data Component		Data Element Summary		Base	User
Element	Element Name			Attributes	Attributes
8051	TRANSPORT STAGE CODE QUALIFIER			M 1 an..3	M
		Code qualifying a specific stage of transport.			
		10	Pre-carriage transport Transport by which the goods are moved prior to their main carriage transport.		
		30	On-carriage transport Transport by which the goods are moved after the main carriage transport.		
8028	MEANS OF TRANSPORT JOURNEY			C 1 an..17	O

# Possible example

```
UNH+00000189101+IFTDGN:D:03A:UN:PROT20'  
BGM+89N+00000189101+9'  
DTM+137:201409291135:203'  
FTX+CHG++CAM'  
HAN+T'  
RFF+AAY:TRANSIT 1411'  
TDT+20+1411+1+++++9434929:::XXXXXXXXXX:HK'  
RFF+ATZ:V135738'  
LOC+153+BEANR'  
DTM+132:201409300000:203'  
DTM+133:201409300000:203'  
NAD+MR+POA'  
NAD+MS+XXXBEL'  
NAD+DA+XXXBEL+JOHN DOE:XXXBEL:STREET:ANTWERP'  
CTA+IC+:JOHN DOE'  
COM+32(0)3 0000000:TE'  
COM+JOHN.DOE@ANTWERP.BE:EM'  
CNI+1+564759013'  
LOC+200+BEANR'  
TDT+20++1'  
RFF+ALH:VSM0002182'  
GID+1+18:11H2'  
DGS+IMD+7+2978'  
FTX+AAD+++RADIOACTIVE MATERIAL, URANIUM HEXAFLUORIDE'  
MEA+AAE+AAL+KGM:00000003309.60'  
SGP+XXXU9785568'  
LOC+147+0330702'  
GID+...  
UNT+37+00000189101'
```

- ... or if there are any other – and better – solutions, we ‘re glad to hear them !



**THANK YOU !**

Kurt Van Passen

E [kurt.vanpassen@portofantwerp.com](mailto:kurt.vanpassen@portofantwerp.com)

T +32 3 205 21 70

W [www.portofantwerp.com/HMO](http://www.portofantwerp.com/HMO)



**Port of  
Antwerp**