

Change request IFTDGN

Transport license for remain on board notifications of DG.

October 1st -2nd
2014



Agenda



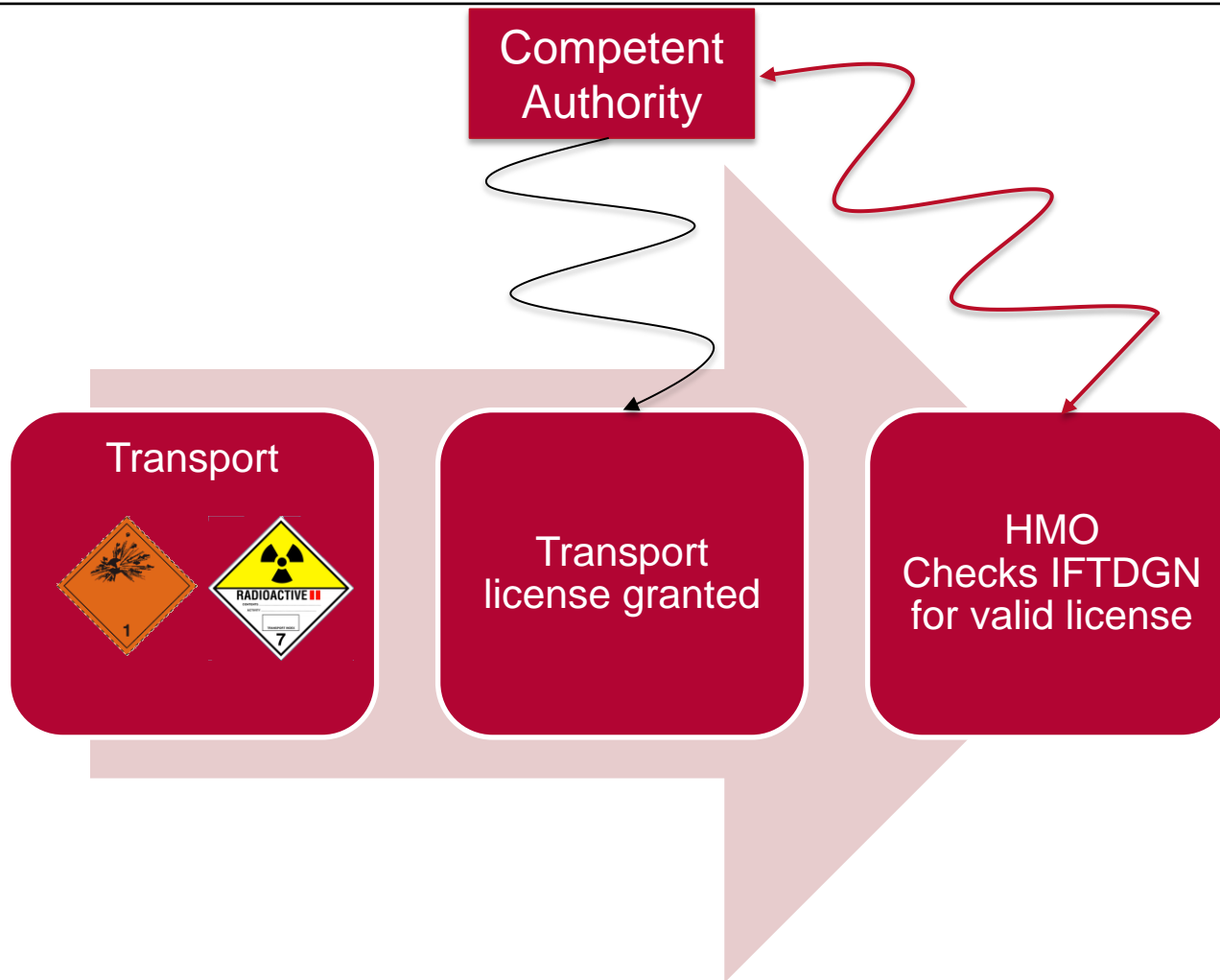
- 1. Functional application in Antwerp**
- 2. Standard use in PROTECT IFTDGN**
- 3. Change request**

1

Transport license

Functional application in Antwerp

Use of transport license info in Antwerp



Transport licenses:

- Linked to dangerous goods
- Not to a specific means of transport

In the development of DG Module of APICS2



**Mandatory use on CNI-level
Not allowed on Header**



Clear relation to the DG

([more info](#) on APCS website)

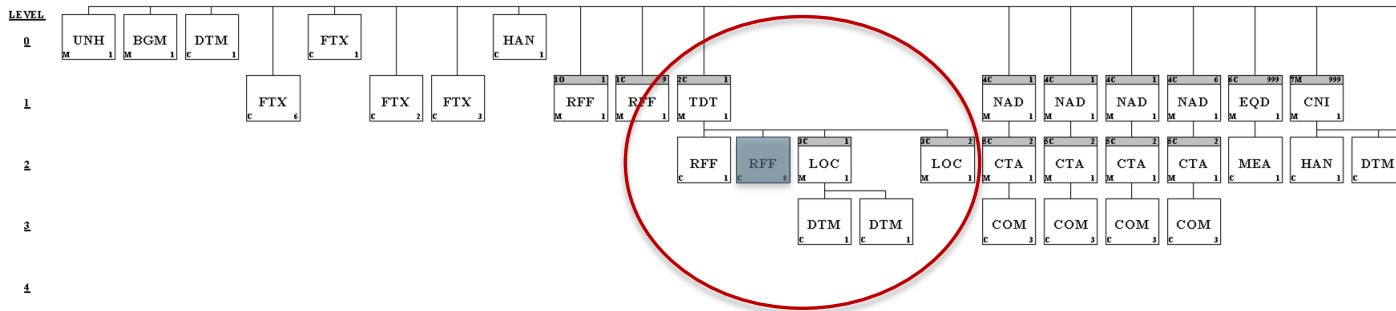
2

Transport license

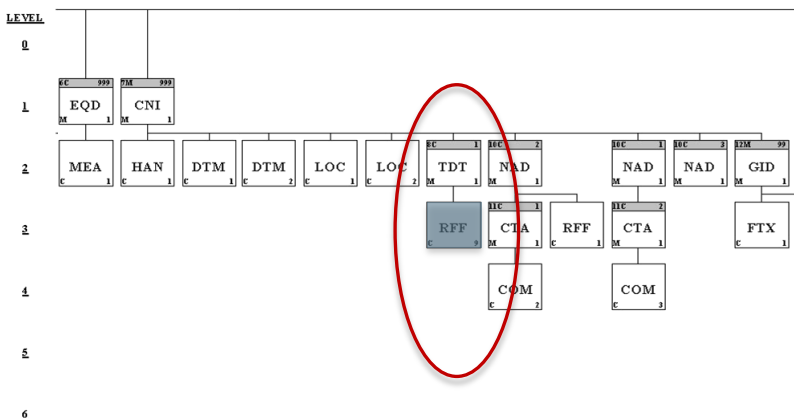
Standard use in Protect IFTDGN

Use of transport license info in the IFTDGN

- transport license info is located in the IFTDGN in the TDT-segment:
 - on header level:



- on consignment level:



3

Transport license

Change request

Scenario: Remain on board (ROB)

- No TDT-segment present on CNI-level in case of ROB
- So no TDT.RFF is possible to mention license number permission
- No location in the IFTDGN for a transport license ...

- Possible solution:

extending data element 8051
(Transport stage code qualifier)
in segment group 8:

allowing an extra value '20'
(Main carriage transport), as used
in TDT on header level

Dangerous Goods Notification message



Segment: TDT Transport Information
Position: 0300 (Trigger Segment)
Group: SG7-SG8
Level: 2
Usage: Mandatory
Max Use: 1
Purpose: A segment to indicate the transport information related to the arrival (pre-carriage) or the departure (on- carriage) of the consignment. The transport details to be specified: - Pre-carriage - On-carriage

Dependency Notes:

Data Component		Data Element Summary		Base	User
Element	Element Name			Attributes	Attributes
8051	TRANSPORT STAGE CODE QUALIFIER			M 1 an..3	M
		Code qualifying a specific stage of transport.			
		10	Pre-carriage transport Transport by which the goods are moved prior to their main carriage transport.		
		30	On-carriage transport Transport by which the goods are moved after the main carriage transport.		
8028	MEANS OF TRANSPORT JOURNEY			C 1 an..17	O

Possible example

```
UNH+00000189101+IFTDGN:D:03A:UN:PROT20'  
BGM+89N+00000189101+9'  
DTM+137:201409291135:203'  
FTX+CHG++CAM'  
HAN+T'  
RFF+AAY:TRANSIT 1411'  
TDT+20+1411+1+++++9434929:::XXXXXXXXXX:HK'  
RFF+ATZ:V135738'  
LOC+153+BEANR'  
DTM+132:201409300000:203'  
DTM+133:201409300000:203'  
NAD+MR+POA'  
NAD+MS+XXXBEL'  
NAD+DA+XXXBEL+JOHN DOE:XXXBEL:STREET:ANTWERP'  
CTA+IC+:JOHN DOE'  
COM+32(0)3 0000000:TE'  
COM+JOHN.DOE@ANTWERP.BE:EM'  
CNI+1+564759013'  
LOC+200+BEANR'  
TDT+20++1'  
RFF+ALH:VSM0002182'  
GID+1+18:11H2'  
DGS+IMD+7+2978'  
FTX+AAD+++RADIOACTIVE MATERIAL, URANIUM HEXAFLUORIDE'  
MEA+AAE+AAL+KGM:00000003309.60'  
SGP+XXXU9785568'  
LOC+147+0330702'  
GID+...  
UNT+37+00000189101'
```

- ... or if there are any other – and better – solutions, we ‘re glad to hear them !



THANK YOU !

Kurt Van Passen

E kurt.vanpassen@portofantwerp.com

T +32 3 205 21 70

W www.portofantwerp.com/HMO



**Port of
Antwerp**